



SAGA²/Creation Connect

Gerflor[®]



SAGA² - Gentleman Blue

TILE SOLUTIONS THAT ADD VALUE TO THE BUILD ENVIRONMENT

SAGA²

Integrated underlayment for significant noise reduction



SAGA² is a noise reducing resilient modular tile that matches the thickness of carpet tiles and can be used alongside without transitions. Saga2 has a cork and vinyl backing that provides excellent sound management properties throughout a room. Protected by a 28 mil wearlayer, it features our exclusive ProtecSol surface treatment which produces a no-wax surface for the life of the floor.



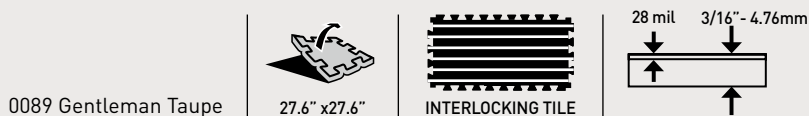
SAGA² Connect - Gentleman Taupe

Creation Connect

Easy installation for fast renovation over existing floors



Featuring Gerflor's patented dovetail system that ingeniously hides seams, Creation Connect interlocking tiles quickly and easily installs over existing floors like VCT and ceramic. Creation Connect is protected by a 28 mil wearlayer, ideal for durability in high traffic areas.



For more details please refer to Gerflor's installation guidelines



SAGA²

SAGA² - Dock Grey



Recycled content
55%



Comfort



Acoustic



90° installation



Creation Connect

Creation Connect - Dalma Burgundy



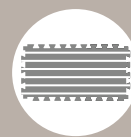
Interlocking installation
with dovetails



Installation over
existing floors*



Fast and easy
Installation

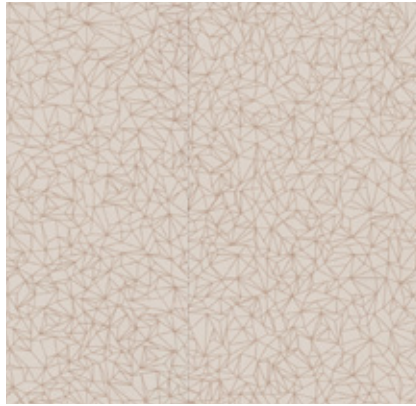


Non-Directional
Pattern

SAGA²



0026 Fiber Copper



0033 Spider Beige



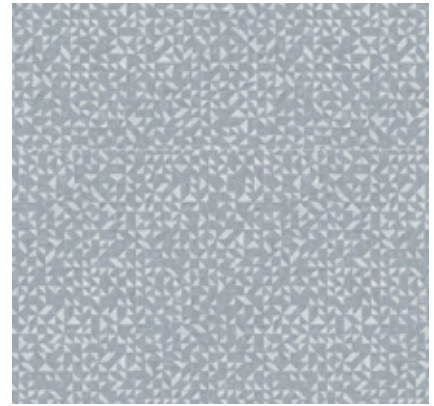
0028 Fiber Silver



0577 Albion



0025 Barma Beige



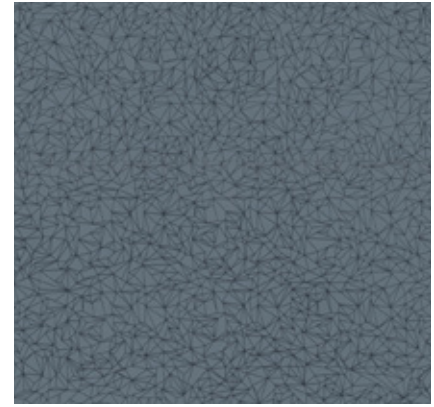
0032 Mozaic Grey



0579 Amarante



0023 Barma Mystery



0039 Spider Blue



0572 Amarante Dark



0017 Kadina City



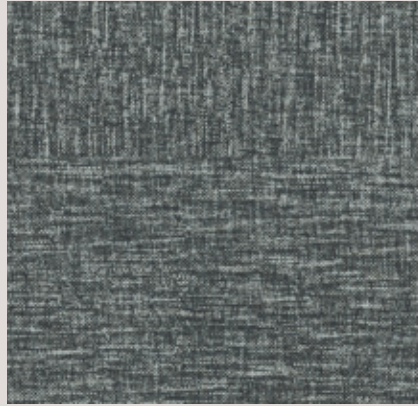
0027 Fiber Heavy Metal



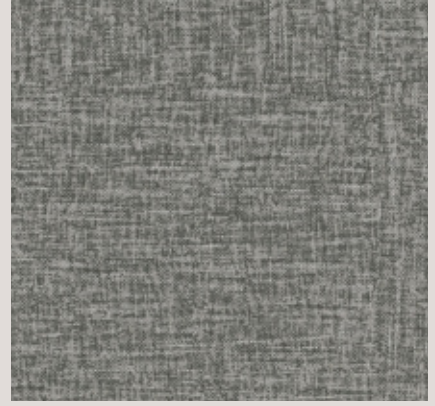
SAGA² / Creation Connect



0029 Gentleman Beige



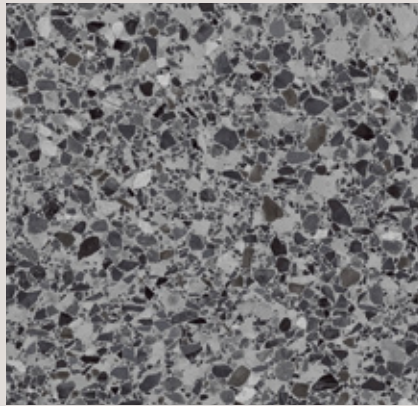
0088 Gentleman Grey



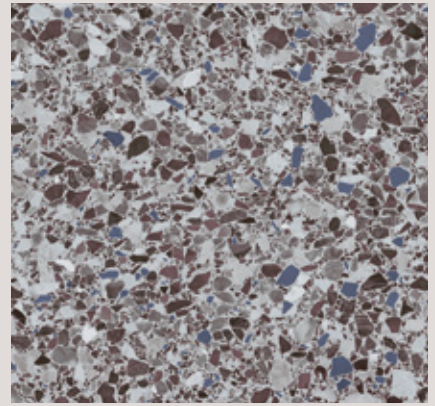
0089 Gentleman Taupe



0021 Barma Sweet



1088 Dalma Grey



1089 Dalma Burgundy



0030 Gentleman Blue



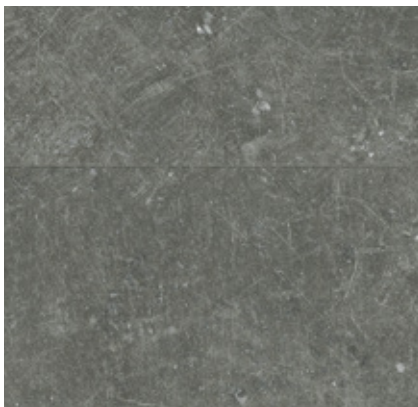
0063 Rough Textile Grey



0062 Rough Textile Beige



0087 Dock Taupe



0085 Dock Grey



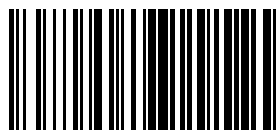
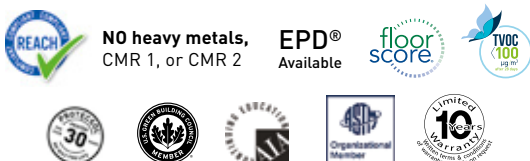


GERFLOR USA
877.437.3567
info@gerflorusa.com

gerflorusa.com

DESCRIPTION	STANDARDS	REQUIREMENTS	SAGA ²	CREATION CONNECT
PRODUCT DESCRIPTION				
Reference Specification	ASTM F1700		Class III Type B	Class III Type B
Backing	ASTM F1700	-	Compact backing with cork	Resilient Core Backing
Surface Treatment / Maintenance	ASTM F1303	-	Protecsol® / No wax for life	PUR+ Matte
Gauge Total Thickness	-	-	0.18" (4.6 mm)	3/16" (5.0 mm)
Wearlayer Thickness	ASTM F386	-	28 mil (0.7 mm)	28 mil (0.7 mm)
Tile Size	ASTM F410	-	19.685" x 19.685" (50 cm x 50 cm)	27.6" x 27.6"
Coverage per Box	-	-	26.9 ft ² (2.5m ²)	
Weight	-	-	1.15 lbs/ft ² (5.6 kg/m ²)	1.69 lbs/ft ² (8.24 kg/m ²)
PERFORMANCE				
Abrasion	EN 660.2	-	≤ 2 mm ³	≤ 2 mm ³
Indentation – Residual (75 lbs)	ASTM F1914	≤ - 8%	Meets Requirements	Meets Requirements
Coefficient of Friction	ASTM D2047	-	0.56 (Dry)	0.65 (Dry)
Impact Insulation Class (IIC)	ASTM E989	-	58 dB	45 dB
	ASTM E492			
Resistance to Heat	ASTM F1514	ΔE ≤8	Meets Requirements	Meets Requirements
Resistance to Light	ASTM F1515	ΔE ≤8	Meets Requirements	Meets Requirements
Dimensional Stability	F2199	< 0.02 in	Meets Requirements	Meets Requirements
Chemical & Stain Resistance (5 min and 24 hours)	ASTM F925	-	Meets Requirements	Meets Requirements
Fire Rating	ASTM E648	Class 1	Class 1	Class 1
Smoke Density (Flaming and Non-Flaming)	ASTM E662	-	Meets Requirements	Meets Requirements
ENVIRONMENT HEALTH & SAFETY				
Naturally Bacteriostatic. Inhibits the spread of MRSA, E.Coli, S. aureus*	ISO 22196	-	Inhibits spread of infection at 99%	Inhibits spread of infection at 99%
Allergen-Free	-	-	100% Allergen-Free	100% Allergen-Free
Plant Certifications	-	-	ISO 14001, ISO 9001	ISO 14001, ISO 9001
End of Life	-	-	100% Recyclable	100% Recyclable
MATERIALS & RESOURCES (MR)				
Sourcing of Raw Materials: Recycled Content	Sourcing LEED v4.1	-	55%	55%
Restriction of Harmful Chemicals	Materials LEED v4.1	-	100% REACH Compliant	100% REACH Compliant
Environmental Product Declaration (EPD)	EPD LEED v4.1	-	Available Upon Request	Available Upon Request
INDOOR ENVIRONMENTAL QUALITY (IEQ)				
Indoor Air Quality / Low Emitting Materials	IEQ Option 1 LEED v4.1	-	FloorScore® Certified	FloorScore® Certified
TVOC after 28 days	ISO 16000-6	-	<100 µg/m ³	<100 µg/m ³
WARRANTY	10-year limited manufacturer warranty when installed in accordance with Gerflor's installation instructions on gerflorusa.com.			

*The implementation of an effective cleaning method is the best defense against infections. Please check Gerflorusa.com for most recent installation, maintenance and specification guidance.



GENA0124

